

tinyhomes
T A S M A N I A



Live small, dream big.



Contents

ABOUT TINY HOMES	03
WHAT WE DO	04
CONTAINER TINY HOMES	09
OUR PORTFOLIO	06
BIGGER TINY HOMES	19
PRICING & DELIVERY	22

Your Tasmanian Tiny Home specialists



Are you ready to make your dream of living in a luxurious, minimal-living home (that won't cost you an arm and a leg) a reality? Fantastic - let's get started!

Our experience in the art of tiny homes has enabled us to deliver a range of high-quality products, all finished with superior craftsmanship, to clients across Tasmania and Australia.

We've earned a strong reputation from putting our clients first throughout the build process. At Tiny Homes Tasmania, we want you to feel heard and taken care of at every step of the process, so that, come handover, you can embrace a truly incredible living experience, knowing that it has been carefully crafted to reflect your lifestyle, and your dream space.

At Tiny Homes Tasmania, it's all about customising our end product to your specific needs. While we have standard models to choose from, and basic plans to start from, each project is unique. You can have as much influence in customising the fixtures and finishes as you like, so that at the end of the day your tiny home really is as unique as you are.

What we do



Design

While our standard designs tend to be the most successful layouts for most of our clients' needs, we also understand that each client has their own unique circumstances. We'll work with you to develop the perfect design for your lifestyle and needs.



Construction

We will build your entire home on-site at our Launceston premises, using our own qualified tradespeople. This means we're hands-on with each and every project from start to finish. On average, construction usually takes 10-12 weeks.



Project Management

At the start of each project, we'll work with you to outline your expectations and delivery date. Once the plan is set, we'll keep you informed every step of the way!



Site Works

As part of our full service, we can arrange and undertake all of your siteworks including footings, decking and plumbing/electrical services and project manage these works to line up with your building permits and delivery of your Tiny Home.



Delivery

We can organise delivery to your site anywhere in Tasmania (Including Flinders and King Islands) with our transport partners. This cost is variable and will be quoted depending on location. Interstate delivery can also be organised.



Why choose Tiny Homes Tasmania?



Custom solutions

At Tiny Homes Tasmania, we want you to be as involved (or uninvolved) as you want to be. We know every client is different and will have their own unique set of requirements for how they want their new Tiny Home to look and feel. It is for this reason we not only have a range of pre-designed plans and finishes to choose from, but we also encourage total customisation of your Tiny Home.

We will work closely with you to modify your Tiny Home to suit your unique needs, site restrictions or 'must haves' all within the guidelines of the National Construction Code. On the other hand, if you just want us to take care of all that for you, that is totally fine - we've got it under control.



Competitive prices

We can confidently say that there's nothing else on the market at this price point built to our standard.

Our finished homes are all constructed with a great deal of care and attention to detail - they're comfortable, well-built and extremely durable.



Reliable

We know that being reliable and providing excellent communication through the build of your new home is super important. You can be confident we will work diligently, meet deadlines and provide constant updates of progress.



Attention to detail

When it comes to your new home, it's vitally important that the small things are done right during construction. Each build - and each stage of each build, no matter how small - is scrutinised, checked and rechecked. This attention to detail results in a high-quality product that stands the test of time.

Scottsdale Tiny Home development

Project overview

Our clients approached us with an unused, rural block in Scottsdale to discuss potential development opportunities with Tiny Homes. The result is a 12-unit development comprising eight 2-bedroom homes and four 1-bedroom homes, each with its own yard, which provides affordable housing to the Scottsdale community and is suitable for long-term rentals.

Using layouts from our 40-foot container homes, this development is a testament to the opportunities Tiny Homes provide our community for affordable, low-impact housing solutions.


12
HOMES


1-2
BEDS


40ft
SIZE



Trevallyn Tiny Home

Project overview

Utilising two 20-foot containers, we were able to create a modular Tiny Home solution that maximises the block's orientation to create a stunning custom solution for our client. Located in the picturesque suburb of Trevallyn in Tasmania's north, capturing the epic views was a non-negotiable.

This tiny home features a master bedroom and ensuite in one 20-foot container, with the kitchen and living room in the second, both connected by a partially covered entertaining deck for all-year-round use.



Tiny 40 Coastal Display Home

Project overview

The brief: coastal, light and calming vibes.

This 40-foot Container Tiny Home features an open living and kitchen area to allow the natural light to flood in and take in the coastal views, a master bedroom and ensuite, and laundry. As with all our Container Tiny Homes, this home includes quality flooring and fixings, a tiled splashback and ensuite.





Container
^ tinyhomes

CONTAINER TINY HOMES

Working from two footprint sizes - 20-foot and 40-foot - these homes come in a range of configurations, so you can find a solution for whatever purpose you have in mind.



Whether you're creating a studio, investing in stylish accommodation, or providing accessible housing for family members, we can help you design the perfect Container Tiny Home for your lifestyle. Our 20-foot and 40-foot plans are fully customisable to fit your needs and preferences. Choose from our pre-designed packages, or work with us to create a unique home with your desired floorplans, finishes, and fixtures. Embrace the tiny house movement and enjoy the freedom, sustainability, and creativity our Tiny Container Home packages provide.



Tiny 20 Studio

14.26m²

Best suited for:



SMALL BUSINESS



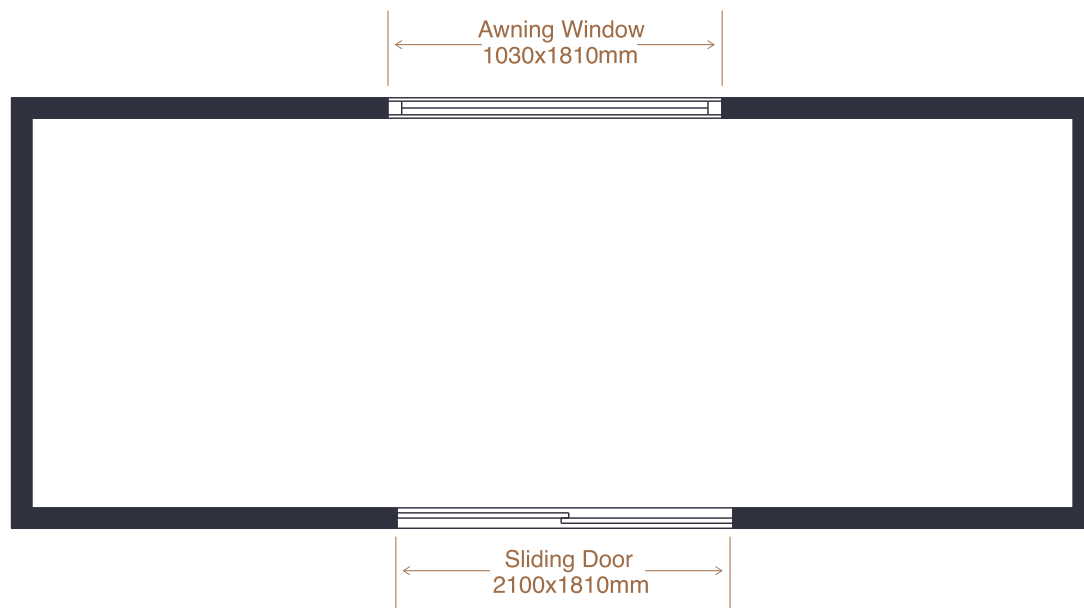
OFFICE



STORAGE



SMALL GYM



Overview

The Tiny 20 Studio is a versatile and compact space that provides the perfect blank canvas for individuals looking to pursue their passions, start a small business, or simply create a cosy and functional workspace. Measuring just 20 feet in length, this Container Tiny Home is designed to be both efficient and customisable, allowing you to make the most of every inch.

Featuring a spacious awning window at the back, the Tiny 20 Studio lets in ample natural light, creating a bright and airy atmosphere that is perfect for creative pursuits. The sliding doors at the front provide easy access and allow you to open up the space to the outdoors, further enhancing the feeling of space and freedom.

Whether you need a storage area for your supplies, a dedicated office space for your work, or a cosy retreat to pursue your hobbies, the Tiny 20 Studio provides the perfect foundation for your vision. With its simple and minimalist design, this tiny home is a blank slate that can be easily customised to suit your needs and style.

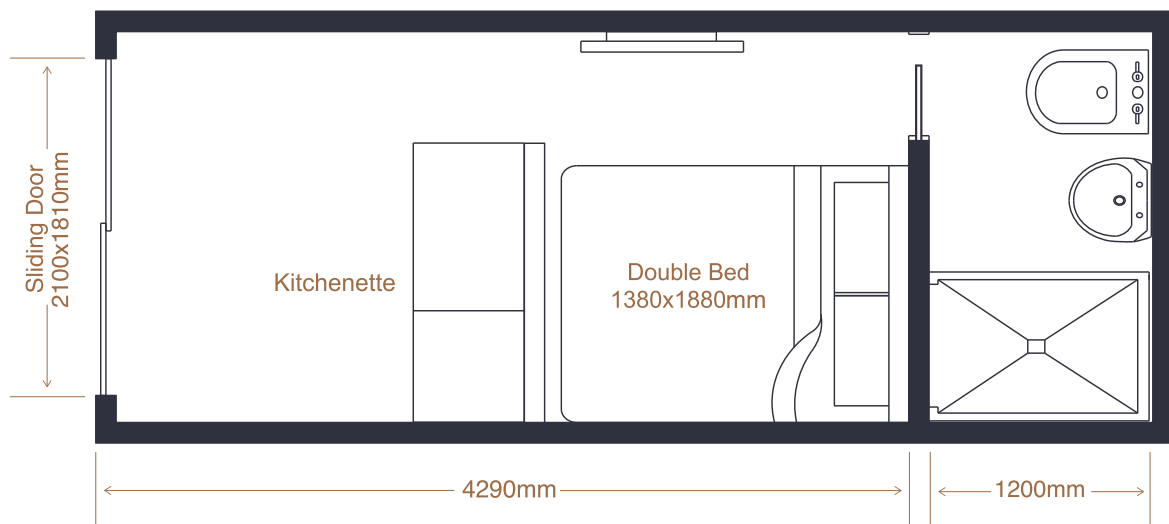
FLOOR AREA	14.26m ²
DIMENSIONS	6.09m long 2.44m wide 2.9m high (External measurements)
BEST FOR	Alternate uses
PRICE	From \$39,000

Tiny 20 Plan 1

14.26m²

Best suited for:

- 
**SHORT TERM
ACCOMMODATION**
- 
**GRANNY
FLAT**
- 
AIRBNB
- 
**TEENAGE
RETREAT**
- 
**GUEST
HOUSE**



Overview

The Tiny 20 Plan 1 is a cosy and functional 20-foot Container Tiny Home that provides all the essentials you need for a comfortable stay. With its clever design and efficient use of space, this tiny home is ideal for a wide range of uses, from a teenage retreat to a guest house to short-term accommodation.

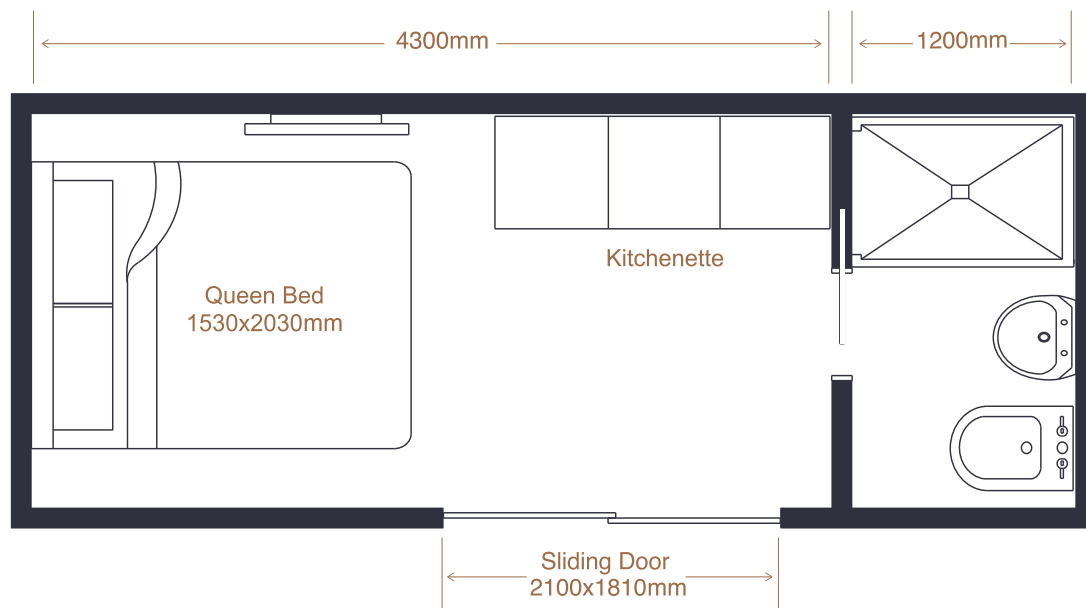
Inside, the Tiny 20 Plan 1 comfortably fits a queen or double bed, and a lounge with ample room for a TV, providing the perfect space to nestle in and unwind. The kitchenette is equipped with all the essentials including a sink, mini fridge, and cooktop, and smart storage gives you optional pantry or wardrobe space. The ensuite provides a private and convenient bathroom. With its compact and efficient design, this tiny home is a stylish and affordable solution that provides all the amenities you need for your guests to have a comfortable and relaxing stay.

FLOOR AREA	14.26m ²
DIMENSIONS	6.09m long 2.44m wide 2.9m high (External measurements)
ROOMS	Full ensuite Double or queen bed Kitchenette
ACCOMMODATES	Single or couple
BEST FOR	Short-term accommodation, granny flat, Airbnb, teenage retreat
PRICE	From \$59,000

Tiny 20 Plan 2

14.26m²

Best suited for:



Overview

Like Plan 1, the Tiny 20 Plan 2 is a 20-foot Tiny Container Home that contains everything you need between its four walls. It is suitable for a range of purposes, including a residence for a teenager or older relative, short-term holiday accommodation, or a guest house.

The Tiny 20 Plan 2 includes space to fit a queen or double bed comfortably, and the wardrobe/pantry offers plenty of storage space for your belongings. The kitchenette is equipped with all the essentials you need to prepare meals, including a sink, mini fridge, and cooktop, while the lounge room with TV provides a cosy and inviting space to relax and unwind. With its compact and efficient design, this tiny home offers all the amenities you need for a comfortable and relaxing stay.

FLOOR AREA	14.26m ²
DIMENSIONS	6.09m long 2.44m wide 2.9m high (External measurements)
ROOMS	Full ensuite Double or queen bed Kitchenette
ACCOMMODATES	Single or couple
BEST FOR	Short-term accommodation, granny flat, Airbnb, teenage retreat, guest house
PRICE	From \$59,000

Tiny 40 Plan 1

29.65m²

Best suited for:



ELDERLY



SMALL FAMILY



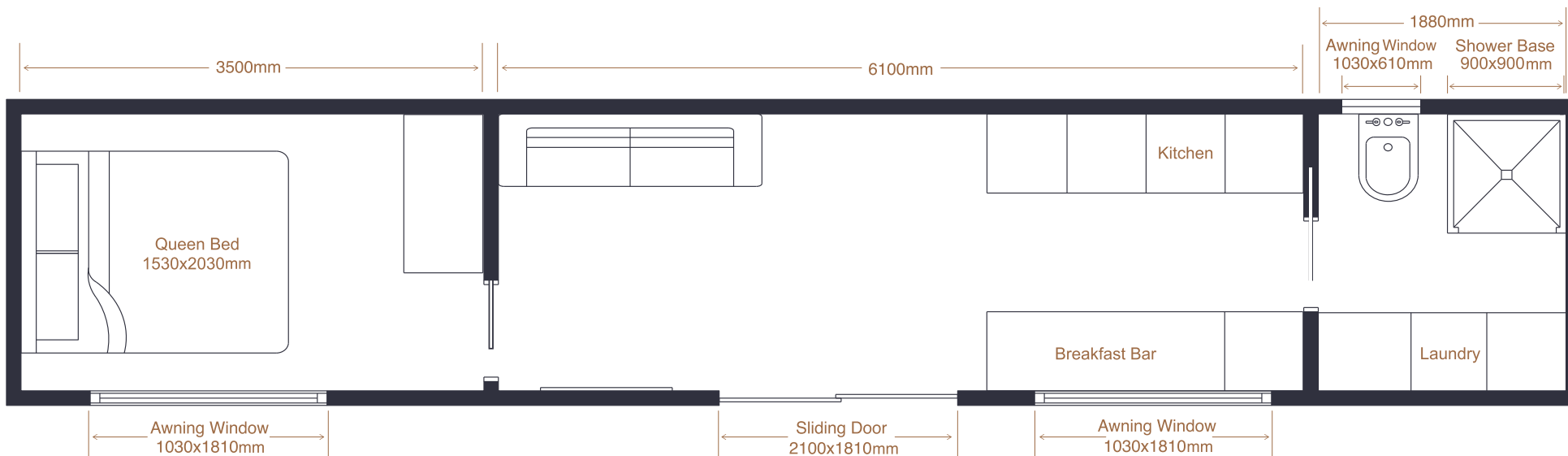
ACCOMMODATION OR RENTAL



GRANNY FLAT



HOLIDAY HOME



Overview

A thoughtfully designed Tiny Home that seamlessly combines space and functionality. Plan 1 is perfect for individuals or couples seeking an affordable and cosy living environment, this home maximises its compact layout to offer comfort and efficiency.

The private bedroom includes built-in wardrobes for ample storage. The fully equipped kitchen features generous counter space and provisions for a cooktop, full-sized fridge, and oven. A convenient dining bench

offers space for meals, and the inviting living room accommodates a 3-seater couch and TV. The bathroom is cleverly designed with an integrated laundry area to optimise space. Awning windows in the bedroom and kitchen bring in natural light and ventilation, while sliding doors in the lounge and bedroom provide an easy indoor-outdoor flow.

This is a stylish, customisable option for full-time living or weekend getaways, offering an efficient solution for modern living.

FLOOR AREA	29.65m ²
DIMENSIONS	12.20m long 2.44m wide 2.9m high (External measurements)
ROOMS	1 bedroom w/built-in robe Full bathroom and laundry Kitchen and dining Lounge room to fit 3-seater couch
ACCOMMODATES	2 people
PRICE	From \$109,000

Tiny 40 Plan 2

29.65m²

Best suited for:



ELDERLY



SMALL FAMILY



ACCOMMODATION OR RENTAL



GRANNY FLAT



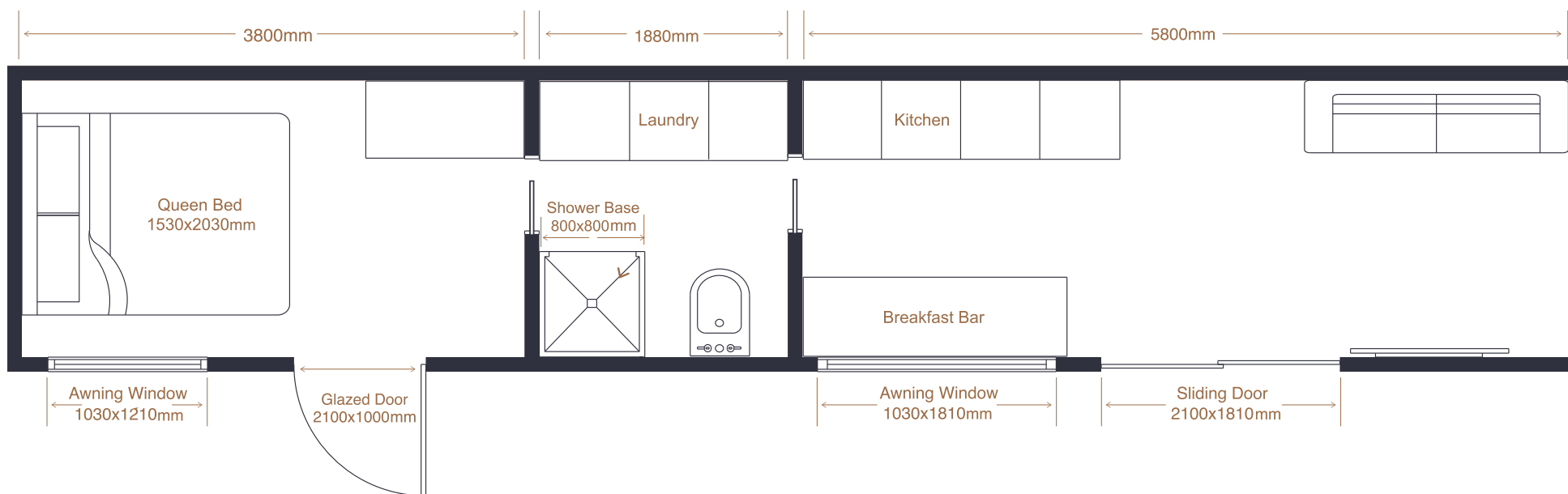
AIRBNB



TEENAGE RETREAT



HOLIDAY HOME



Overview

The Tiny 40 Plan 2 is a Tiny Home that brings a blend of style and practicality to open-plan living. Ideal for individuals or couples, it offers a chic, functional space with innovative design. The expansive main room seamlessly integrates a full-sized kitchen, dining bench, and living area, creating a bright, airy environment perfect for daily living and entertaining, thanks to the natural light flooding in through the bedroom's awning window.

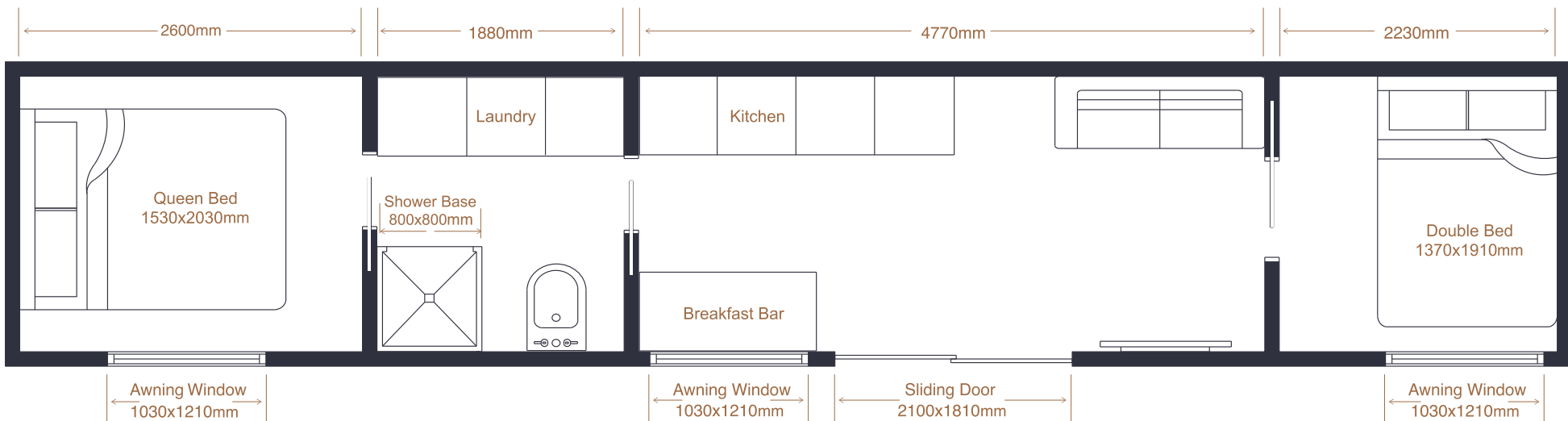
The bedroom's open-plan layout enhances the sense of space, while the large window brings in fresh air and light. A cleverly designed bathroom features a laundry setup, adding to the home's convenience. Two sliding doors connect the indoors with the outdoors, making it easy to enjoy sunny days or host gatherings. The Tiny 40 Plan 2 offers a stylish yet affordable option for those seeking a unique and modern living experience. The Tiny 40 Plan 2 is a stylish, affordable option for those seeking a unique living experience.

FLOOR AREA	29.65m ²
DIMENSIONS	12.20m long 2.44m wide 2.9m high (External measurements)
ROOMS	1 bedroom Full bathroom and laundry Kitchen and dining Lounge room to fit 3-seater couch
ACCOMMODATES	Single or couple
PRICE	From \$109,000

Tiny 40 Plan 3

29.65m²

Best suited for:



Overview

Plan 3 blends functionality with a unique layout, perfect for individuals or couples seeking comfort and efficiency.

It features a private bedroom with built-in wardrobes and an awning window for natural light and airflow. The bathroom ensuite is conveniently located next to the bedroom, while the living area offers space for a day bed, providing an additional sleeping option for guests. The kitchen is equipped with essential appliances and ample

counter space, including room for a cooktop, fridge, and oven. A dining bench complements the space, and the living room is designed to fit a 3-seater couch and TV, creating a cosy retreat.

Awning windows at both ends of the home and in the kitchen provide a bright, airy environment, while sliding doors enhance indoor-outdoor flow. Tiny 40 Plan 3 is fully customisable and perfect for both permanent living and occasional retreats.

FLOOR AREA	29.65m ²
DIMENSIONS	12.20m long 2.44m wide 2.9m high (high cube) (External measurements)
ROOMS	1 bedroom w/built-in robe Full bathroom and laundry Kitchen and dining Lounge room to fit 3-seater couch
ACCOMMODATES	Single/couple/small family
PRICE	From \$109,000

Inclusions and extras list

Whether you're choosing a 20-foot Tiny Container Home, a 40-foot Tiny Container Home, or a Bigger Tiny Home, most of the things you'll need to move in straight away are included.

If you would rather choose your own inclusions, however, you still have the freedom to do so - it might just come with an extra cost to you. Check out the inclusions for each product here:

Container Tiny Home inclusions

+ BUILDING

- High cube single trip A grade container
- Timber framing
- R2 insulation in walls
- R4 insulation in ceilings
- Plastered throughout
- Premium double-glazed windows and doors
- Base kitchen/laundry cabinetry as per plans

+ PLUMBING

- All plumbing by certified trades
- Bathroom with shower base, laminated panel shower walls, enclosed shower screen
- Chrome fixtures and fittings

+ ELECTRICAL

- All electrical by certified trades
- Ducted 'Tastic' heat light
- Exterior lighting
- Flush mount ducted exhaust fan in kitchen
- Westinghouse 60cm oven (40ft only)
- Westinghouse 60cm ceramic cooktop (40ft only)

+ FIXTURES & FINISHES

- Engineered timber look floating floor
- Pine skirting and architraves
- Tiled splashbacks in bathroom and kitchen in white subway tiles
- Interior painted in Dulux Natural White

+ CABINETS

- White gloss doors
- Tas Oak timber benchtops
- Chrome fittings

Optional extras (container)

+ BUILDING

- Window and door upgrades: choose to include more doors/windows, bigger windows/doors, add bi-fold windows

+ PLUMBING

- Hot water cylinder or continuous flow gas hot water system
- Premium tapware (in kitchen and bathroom)

+ ELECTRICAL

- Reverse cycle air conditioning (heating)

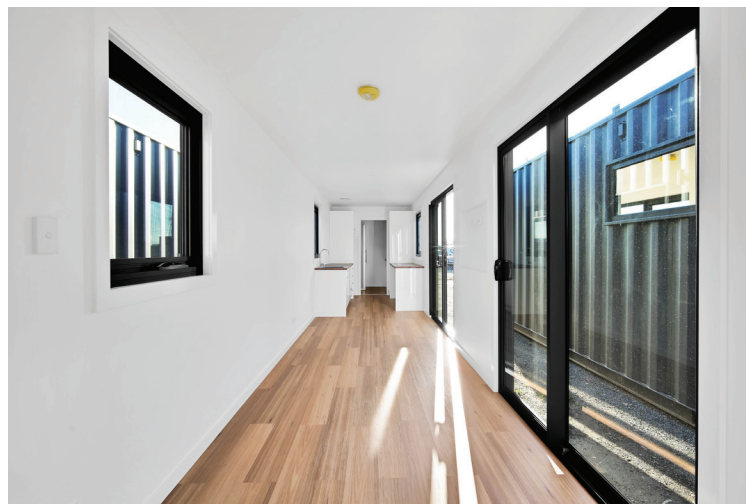
+ FIXTURES & FINISHES

- Kitchen cabinetry upgrades, panel colours and handles
- Cabinetry upgrade to accommodate full-size fridge
- Overhead kitchen cabinetry
- Carpet or alternative flooring
- Walk-in tiled shower base and bathroom floor
- Blockout roller blinds

+ MINIMUM ON-SITE REQUIREMENTS

- Pier footings with container tie-downs
- Plumbing and electrical connections
- Decking or entry steps
- Roofing and guttering
- Hot water cylinder installation

What people say about living in a Tiny Home



Germaine TREVALLYN

“My experience with Tiny Homes Tasmania exceeded all my expectations... the team understood exactly what I wanted and working with them was a pleaser. [They] provided exactly what I envisioned; a well thought out and constructed tiny home that was stylish and didn't compromise on quality or finish while providing me with a life style that was sustainable, affordable and enjoyable.”

Greg EVANDALE

“Jason just gave off a great vibe. He was very excited about the project, as it was a man cave, not his typical project. Other places I went to didn't really seem to care, to the point where one of them didn't get back to me, and another didn't show up for an appointment at their premises, and I had made a special trip to Hobart to meet them.”

Mark WESTBURY

“We cannot thank Jason from Tiny Homes Tasmania enough for the professional approach he took with us - from the first call he was welcoming and nothing was an issue. He made suggestions for the fit out and was on hand for any queries we had either through calls or by message.”



Bigger
tinyhomes

BIGGER TINY HOMES

The Bigger Tiny Home is our new product that still gives you all the perks of a tiny home but a heap more space.



These custom-built homes are over double the size of our 40-foot container homes, which means they can accommodate up to three bedrooms. They are, however, still road-transportable and one unit (not modular) so they can be easily moved to your site.

Unlike our Container Tiny Homes, our Bigger Tiny Homes are built from scratch - they don't start as a shipping container. They also offer a more bespoke design option (than our container homes). We'll work with you to customise your 'bigger' tiny home to suit your needs, your site, and your lifestyle... and, of course, to maximise your comfort. Let's talk bigger.

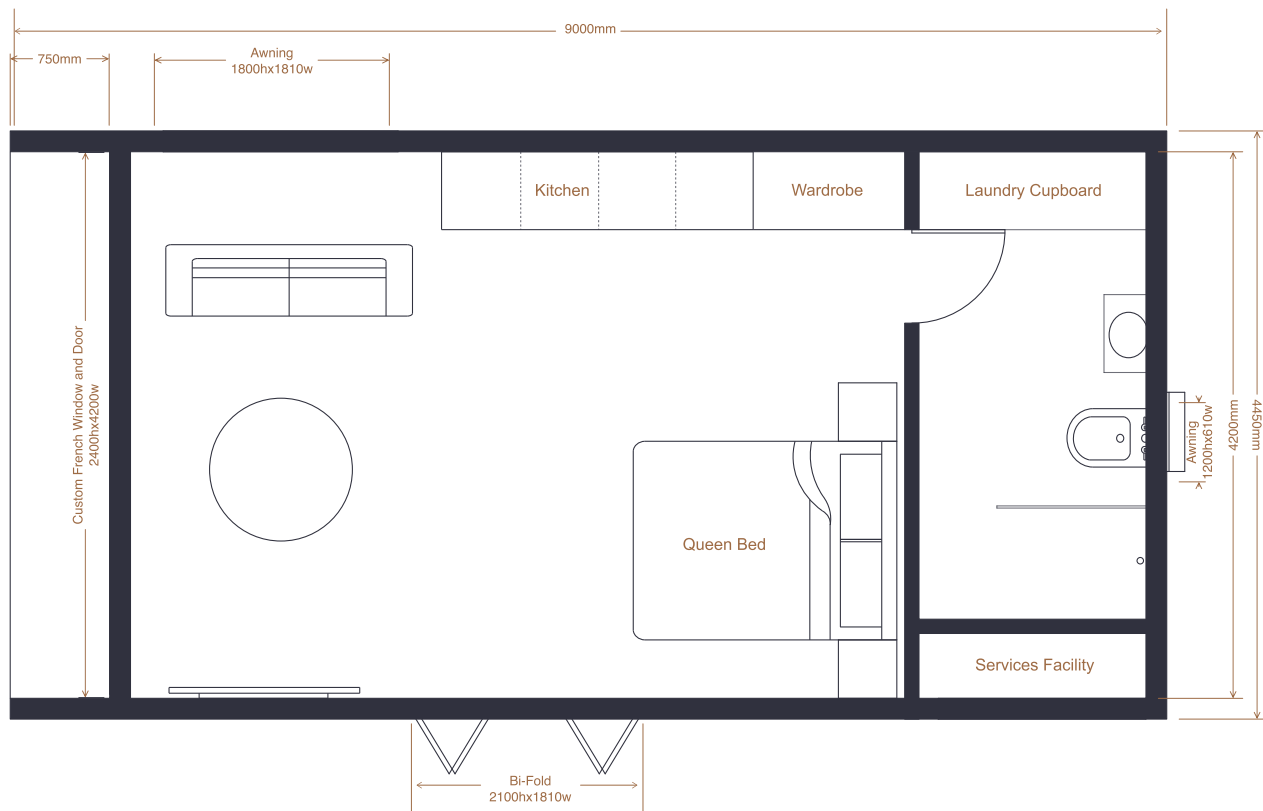


Big 40

1 bed

40m²

Best suited for:



Overview

The Bigger Tiny Home 40m² floorplan gives you all the benefits of compact living but a bit more space than our Tiny Container Homes. As the plan suggests, this plan will give you 40m² of floor space, which includes space for a queen bed, double-seater couch, kitchen, built-in robes, and separate bathroom/laundry.

Our Bigger Tiny Home plans are fully equipped with everything you need to move straight in and enjoy, including premium fixtures and fittings, ABI Interiors brushed nickel tapware and 16mm porcelain benchtops and splashbacks in the kitchen and bathroom. Two colour palettes make it easy to choose a finish that suits your style, with options for benchtop and splashback, bathroom floor tiles, cabinetry, and bedroom carpet.

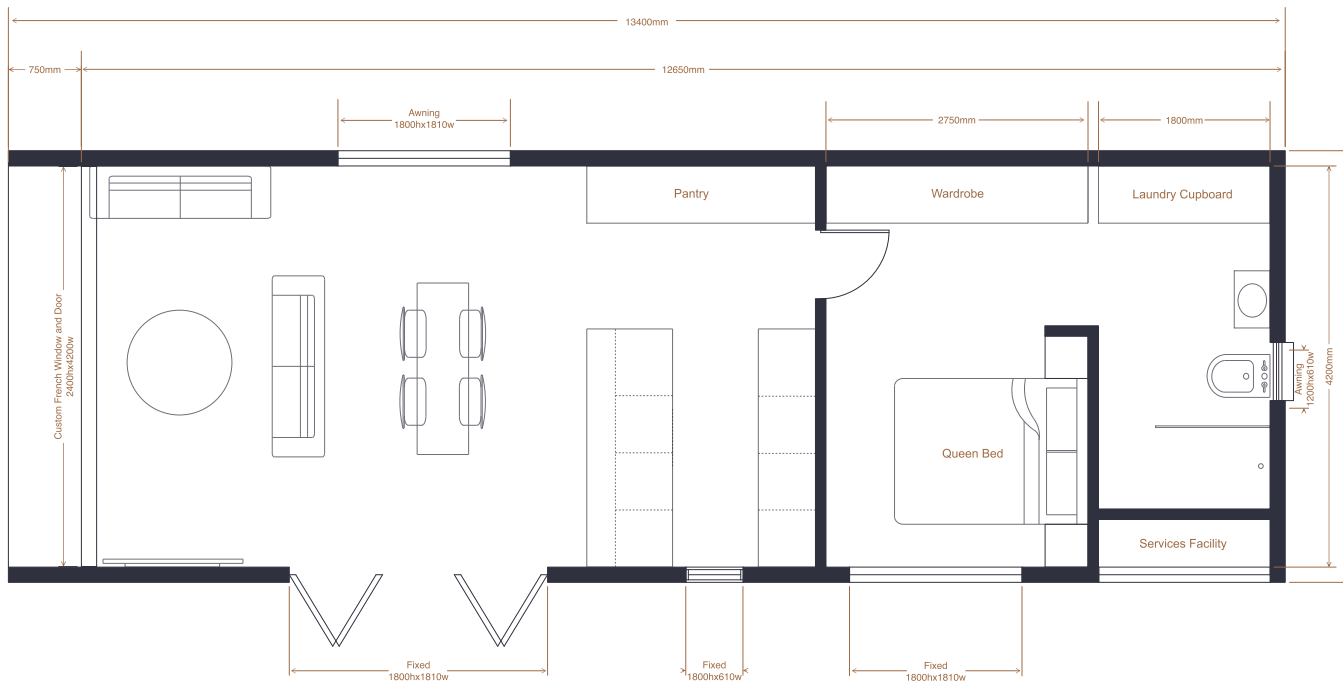
FLOOR AREA	40m ²
DIMENSIONS	9m long 4.45m wide 3.6m high (External measurements)
ROOMS	Full ensuite Double or queen bed Kitchenette
ACCOMMODATES	Single or couple
BEST FOR	Short-term accommodation or rental, Airbnb, teenage retreat
PRICE	Price on request

Big 60

1 bed

60m²

Best suited for:



Overview

Working with 60m² of floor space, these light-filled spaces aren't hard to come by. This one-bedroom plan enjoys a private master suite with spacious built-in robes and ensuite. In the main living area, you'll enjoy a full-service kitchen with 16mm porcelain benchtops and splashbacks (where you can choose your colour palette from two options), ABI Interiors brushed nickel fixtures and finishes (with the optional extra to upgrade to premium tapware of your choosing), dishwasher and oven. The living area is light-drenched, thanks to the custom French window and door sitting 2400mm high and 4200mm wide.

Whether you're looking for a holiday home for yourself, an ancillary dwelling for a loved one that offers a bit more space and flexibility than our Tiny Container Homes, or holiday accommodation, this plan offers everything you need for every occasion.

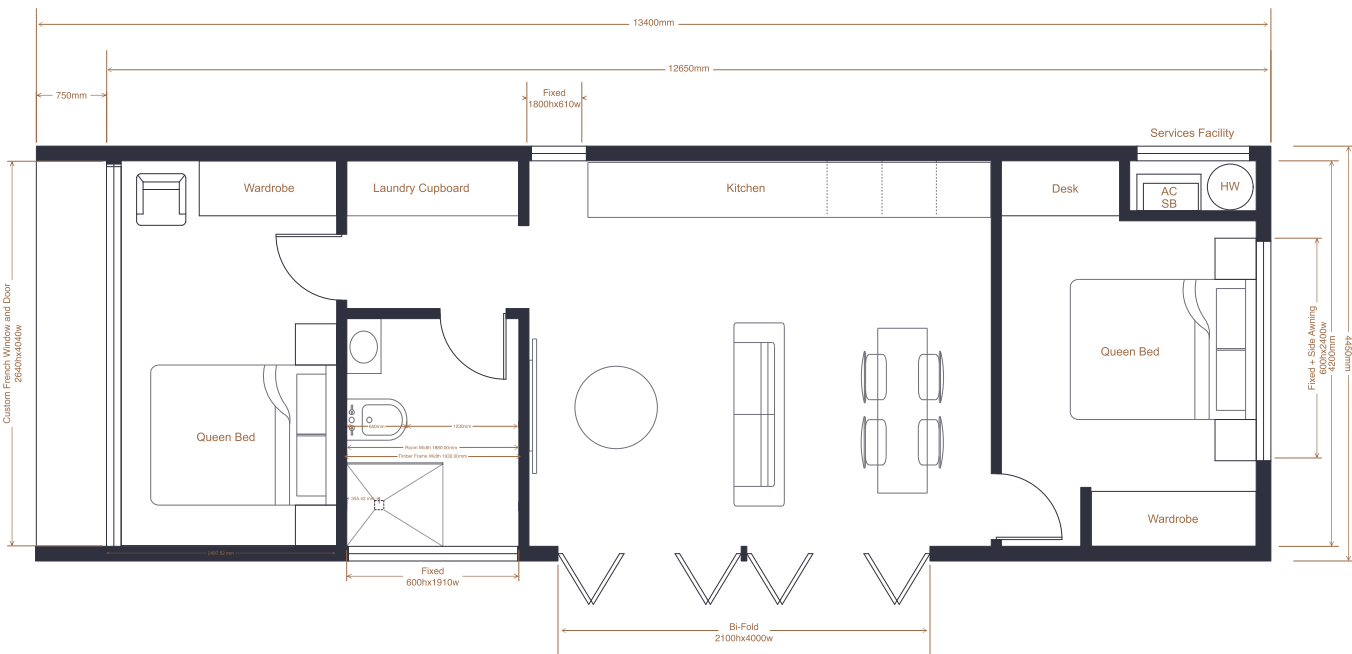
FLOOR AREA	60m ²
DIMENSIONS	13.40m long 4.45m wide 3.6m high (External measurements)
ROOMS	1 bedroom with built in robe Double or queen bed Full kitchen Living and dining
ACCOMMODATES	Single or couple
BEST FOR	Short-term accommodation or rental, Airbnb, teenage retreat
PRICE	From \$219,000

Big 60

2 bed

60m²

Best suited for:



Overview

Using the same footprint as plan 2, this plan also utilises 60m² of floorspace. Like all our Bigger Tiny Homes, this is custom-built on steel frames, but has been redesigned to allow for two bedrooms. Still offering a full-service kitchen with base and overhead cabinetry, oven, 16mm porcelain benchtops and splashbacks, ABI Interiors brushed nickel fixtures and fittings - this open plan, light-drenched space becomes your open plan living and dining area.

Both bedrooms enjoy storage with built-in robes, space for a queen bed, and loads of natural light. Bedroom one features custom French doors and a window that opens to the outdoors, while bedroom two has a large, fixed window with a side awning.

This plan is the perfect solution for anyone looking to create a functional and inspiring space that is uniquely your own.

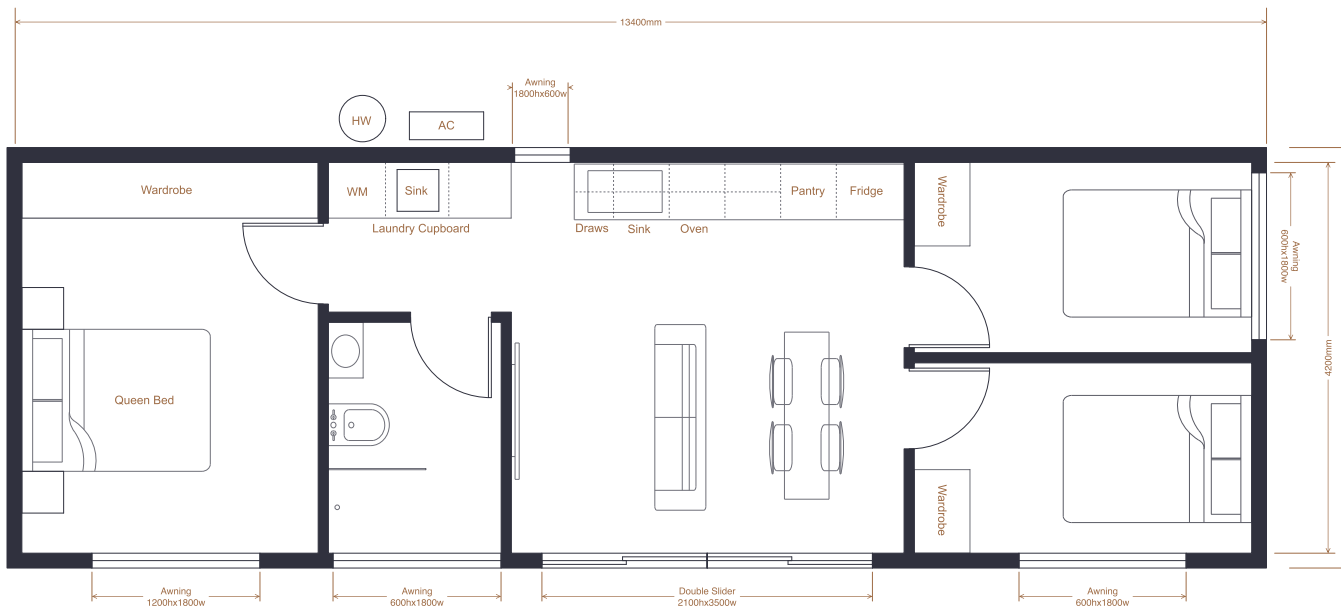
FLOOR AREA	60m ²
DIMENSIONS	13.40m long 4.45m wide 3.6m high (External measurements)
ROOMS	2 bedrooms with built-in robes Full bathroom and laundry Full kitchen Living and dining
ACCOMMODATES	Single/couple/small family
BEST FOR	Short-term accommodation or rental, Airbnb, teenage retreat
PRICE	From \$219,000

Big 60

3 bed

60m²

Best suited for:



Overview

With space for the whole family, this 60m² Bigger Tiny Home makes a perfect family home, holiday home, holiday accommodation or rental property. It offers a master suite with a great-sized built-in robe, as well as two additional bedrooms that include their own built-in robes and allow space for a double bed.

The home also includes a separate bathroom and fully serviced kitchen, where you can choose your fixtures and finishes from our pre-planned colour palettes or take the opportunity to select your own custom pieces to create a style that is exclusively yours.

Spacious and functional, this three-bedroom plan is the perfect solution for creating a budget-friendly space for your lifestyle without having to compromise on luxury and quality. Enjoy open and light-filled living, thanks to the large, glass double sliding doors opening to the outdoors, and fixed awning windows in all bedrooms.

FLOOR AREA	60m ²
DIMENSIONS	13.40m long 4.45m wide 3.6m high (External measurements)
ROOMS	3 bedrooms with built in robes Full bathroom and laundry Full kitchen Living and dining
ACCOMMODATES	Single/couple/small family
BEST FOR	Short-term accommodation or rental, Airbnb, teenage retreat
PRICE	From \$219,000

Inclusions and extras list

Bigger Tiny Home inclusions

+ BUILDING

- Engineered steel base
- Timber framing and bracing
- Colorbond exterior cladding and gutters
- R2.5 insulation in walls
- R5 insulation in ceilings
- Plastered throughout
- Premium double-glazed windows and doors
- Base kitchen/laundry cabinetry as per plans

+ PLUMBING

- All plumbing by certified trades
- Walk-in tiled shower base and bathroom floor
- ABI Interiors brushed nickel fixtures and fittings
- Rinnai continuous flow gas hot water unit

+ ELECTRICAL

- All electrical by certified trades
- Exterior lighting
- Westinghouse 60cm oven
- Westinghouse 60cm ceramic cooktop
- Westinghouse 52cm undermount rangehood
- Reverse-cycle air conditioning (heating)

+ FIXTURES & FINISHES

- Engineered timber look floating floor
- Pine skirting and architraves
- Splashbacks in bathroom and kitchen 16mm porcelain as per chosen colour palette
- Interior painted in Dulux Natural White
- Bedroom carpet as per chosen colour palette

+ CABINETRY

- As per chosen colour scheme
- 16mm porcelain as per chosen colour palette
- Brushed nickel handles

Optional extras

+ BUILDING

- Window and door upgrades: choose to include more doors/windows, bigger windows/doors, add bi-fold windows
- Nailstrip cladding

+ PLUMBING

- Premium tapware (in kitchen and bathroom)
- Dishwasher

+ FIXTURES & FINISHES

- Kitchen cabinetry upgrades, panel colours and handles
- Blockout roller blinds

+ MINIMUM ON-SITE REQUIREMENTS

- Pier footings with container tie-downs
- Plumbing and electrical connections
- Decking or entry steps

COLOUR PALETTES

Palette 1



Floating floor - Choices Flooring, Abode Avenue, Yarra Spotted Gum

Carpet - Choices Flooring, Windarra Shinto

Bathroom floor tiles - Rossetto Tiles, Limestone Beige

Bathroom wall tiles (shower + full main bathroom wall) - Rossetto Tiles, Limestone Beige - option to upgrade this to feature tile of choosing.

Kitchen & laundry benchtop - Rossetto Tiles, Calacatta Prestigio Porcelain

Kitchen & laundry splashbacks - Rossetto Tiles, Calacatta Prestigio Porcelain

Base cabinetry - Polytec, Bone White

Overhead cabinetry - Polytec, Prime Oak Woodmatt

Tapware - ABI Interiors, brushed nickel

COLOUR PALETTES



Floating floor - Choices Flooring, Abode Avenue, Yarra Spotted Gum

Carpet - Choices Flooring, Windarra Shinto

Bathroom floor tiles - Rossetto Tiles, Limestone Charcoal

Bathroom wall tiles (shower + full main bathroom wall) - Rossetto Tiles, Limestone Charcoal - option to upgrade this to feature tile of choosing.

Kitchen & laundry benchtop - Rossetto Tiles, Boost Smoke Porcelain

Kitchen & laundry splashbacks - Rossetto Tiles, Boost Smoke Porcelain

Base cabinetry - Polytec, Black Venette

Overhead cabinetry - Polytec, Tas Oak Woodmatt

Tapware - ABI Interiors, brushed nickel

Tiny Homes Tasmania pricing and delivery

Estimated delivery costs

Our Container Tiny Homes and Bigger Tiny Homes come with surprisingly tiny price tags, offering you an affordable housing option without compromising your lifestyle. With housing affordability becoming increasingly challenging across Australia, our goal at Tiny Homes Tasmania is to help make your dream of home ownership a reality.

We can offer a full service from start to finish, including concept, design, planning approvals and permits, construction of your Tiny Home, project management and construction of your siteworks, delivery, connection to services, and sign-offs. We are also open to a more collaborative approach, for example, if you have your own preferred tradespeople for siteworks or want to take care of the project management yourself.

PRICING	
Tiny 20 Studio	from \$39,000
Tiny 20 (plan 1,2)	from \$59,000
Tiny 40 (plan 1,2,3)	from \$109,000
Bigger Tiny Homes	from \$219,000

Estimated pricing costs

We are able to arrange delivery of your Tiny Home, Australia-wide, with fully insured logistics companies to ensure your product arrives in tip-top condition and without the stress of worrying if it'll survive the trip. Believe it or not, although large, shipping containers are an ideal item to have shipped!

Within Tasmania, one of our crew will be available to accompany your Tiny Home the entire way as well as organise installation and setup of power and water.

If your Tiny Home is being delivered interstate, we will recommend providers that can assist with installation onsite.

Below are the estimated delivery costs for various locations Australia-wide.

DELIVERY	
Launceston (within 50km)	\$500
Hobart (230km)	\$1,000
Statewide (230km+)	\$1,000+
Interstate	P.O.A



tinyhomestasmania.com.au

Contact us



DISPLAY HOME

30 Gilmore Street
Launceston, TAS 7248



PHONE

Jason - 0403 400 714



OPENING HOURS

By appointment.

Please call or email to book
appointment.



EMAIL US

tinyhomes.tas@gmail.com

tinyhomes
TASMANIA

Live small, dream big.